

## Tannoy Square, West Norwood, SE27

2 bedroom flat - purpose built to let

**£415 Per Week**

Furnished

### Property Details

A stunning bright and airy two double bedroom flat, situated within minutes of Gipsy Hill overground Station. A lovely and spacious open plan reception is the heart of the home, comfortable dimensions to relax and unwind, dine and entertain, the kitchen is modern offering an abundance of storage options and surface space. Both bedrooms are spacious and well-proportioned and the property is completed by a family-sized modern bathroom. The property also comes with a secure allocated parking space. The property is conveniently located in the centre of thriving West Norwood, it is also close proximity to Crystal Palace Park and Gipsy Hill station which provides train links to London Bridge and Victoria as well as a London Overground connection at Crystal Palace station.

### Features

- Two bedrooms
- Open plan reception
- Spacious
- Bright and Airy
- Allocated parking
- Close to Gipsy Hill train station

Council tax band C      EPC rating B (81)





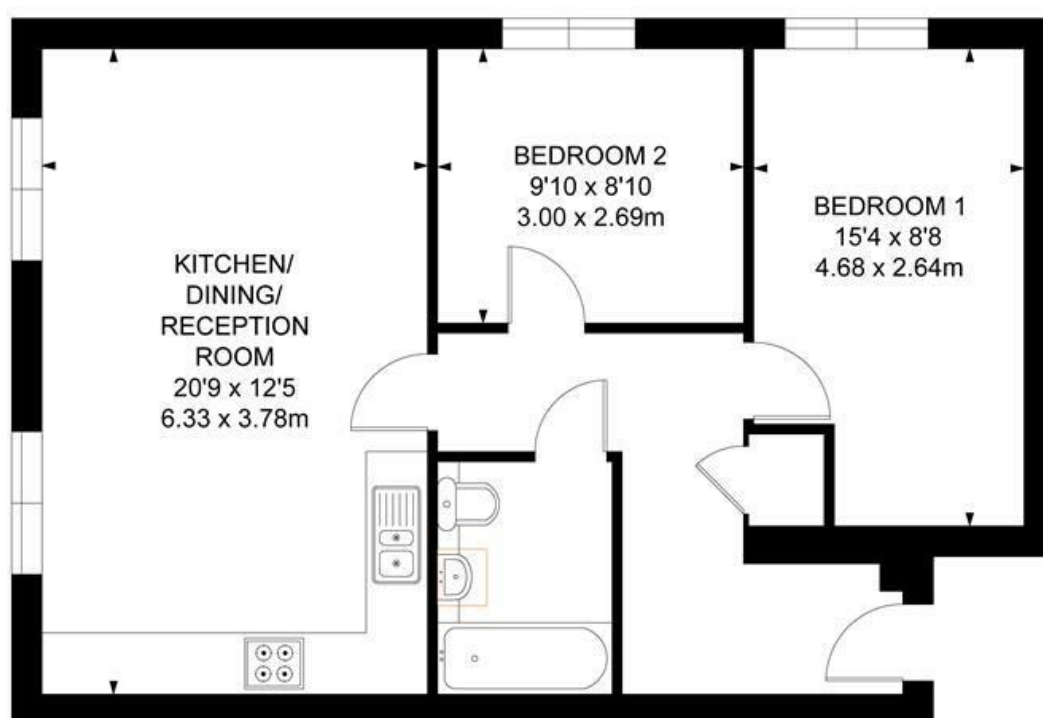
Tannoy Square, West Norwood, SE27

## Tannoy Square, SE27

### 2 Bedroom Flat

APPROXIMATE GROSS INTERNAL AREA :

635 SQ FT / 58.99 SQ M



## THIRD FLOOR



While we try our very best, floor plans are produced as a guide only and we take no responsibility for the precise accuracy with which any property is represented.



Tannoy Square, West Norwood, SE27

